



# **Mountains Recreation and Conservation Authority**

**IRWMP Project Update February 2009**



**Browns Canyon Wash Adjacent – Plummer and Variel**



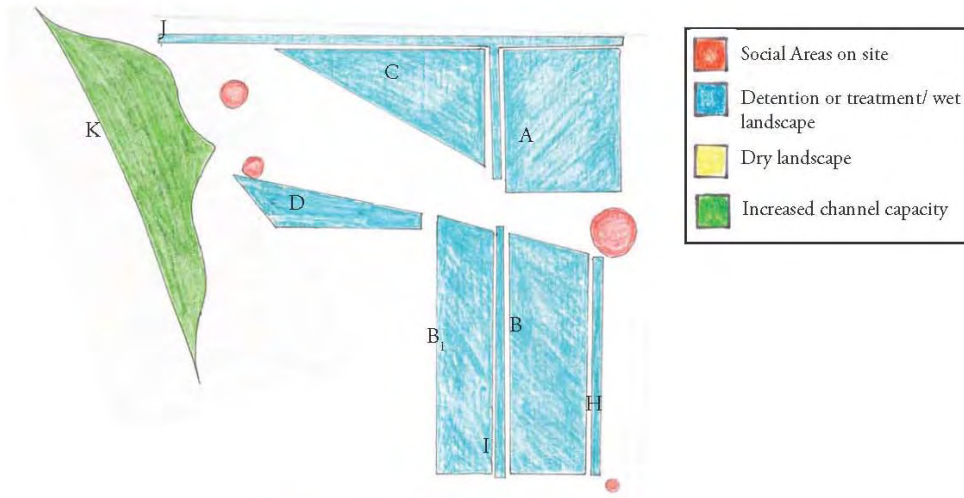






Brown's Canyon Wash at Plummer and Variel Site: Concept Plan

Los Angeles River Strategic Vision  
 Community Development by Design for Mountains Recreation and Conservation Authority



**Calculations for Stormwater Detention and Treatment and Channel Capacity**

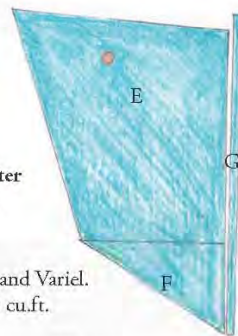
A. Detention area at Itasca and Variel.  
Total capacity: 118,800 cu.ft.

B. Detention area at Plummer and Variel.  
Total capacity: 80,500 cu.ft.

B<sub>1</sub>. Detention area at Plummer and Variel.  
Total capacity: 66,240 cu.ft.

C. Detention area at Itasca.  
Total capacity: 64,600 cu.ft.

D. Detention area at Between Path and Business.  
Total capacity: 2,100 cu.ft.



E. Detention area Adjacent to Wash  
Total capacity: 353,400 cu.ft.

F. Secondary Detention area Adjacent to Wash  
Total capacity: 121,800 cu.ft..

Total New Detention capacity: 807,440 cu ft.  
or 18.5 acre foot

G. Clean and Catch Swale Adjacent to School.  
Total capacity: 16,300 cu. ft

H. Clean and Catch Swale on Variel.  
Total capacity: 5,940 cu. ft

I. Clean and Catch Swale Between B & B<sub>1</sub>  
Total capacity: 6,930 cu. ft

J. Clean and Catch Swale Through Park and on Itasca.  
Total capacity: 9,270 cu. ft

Total Swale capacity: 38,440 cu.ft.

K. Increased Channel Capacity  
Total capacity: 747,500 cu. ft

**Brown's Canyon Wash at Plummer and Variel Site: Quantitative Plan**





**Aliso Wash and Limekiln Creek at Vanalden Park**

















## Legend

### Area 1

- ① Stormwater Diversion and Vortech Installation
- ② Bioswales
- ③ Vegetated Detention/Retention Basin
- ④ Revegetated Area
- ⑤ Low Flow Weir

### Area 2

- ⑥ Debris/Detention Basin
- ⑦ Riser Pipe Inlet
- ⑧ Restored Habitat Around Basin

### Area 3

- ⑨ Open Space/Wildlife Refuge/No Public Access
- ⑩ Vegetated Detention Basin
- ⑪ Bioswales

### Area 4

- ⑫ Vegetated Detention Basin
- ⑬ Low Flow Weir and Pump Station
- ⑭ Discharge to Channel

### Other

- ⑮ Permeable Pavement



**Browns Canyon Wash at Route 118 and Rinaldi**



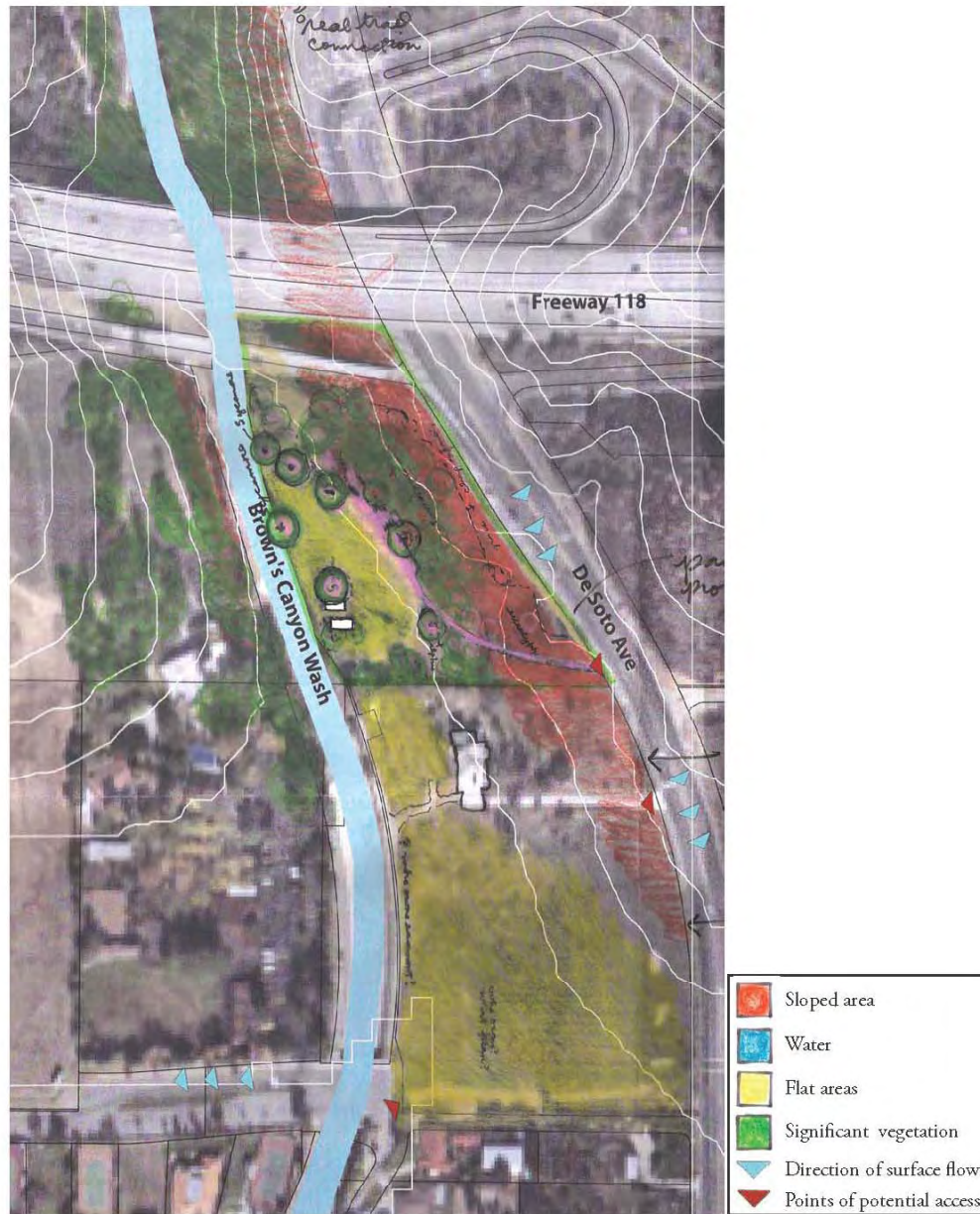


Brown's Canyon Wash at Route 118 and Rinaldi: Site Context

Los Angeles River Strategic Vision  
Community Development by Design for Mountains Recreation and Conservation Authority







### Brown's Canyon Wash at Route 118 and Rinaldi: Site Analysis

Los Angeles River Strategic Vision  
 Community Development by Design for Mountains Recreation and Conservation Authority





Looking north up Brown's Canyon Wash toward the 118



The tree-lined entrance to the site



Looking south down Brown's Canyon Wash



Stone walls suggest a design vocabulary for the site

## Brown's Canyon Wash at Route 118 and Rinaldi: Site Context

Los Angeles River Strategic Vision

Community Development by Design for Mountains Recreation and Conservation Authority





Brown's Canyon Wash at Route 118 and Rinaldi: Concept Plan

Los Angeles River Strategic Vision

Community Development by Design for Mountains Recreation and Conservation Authority

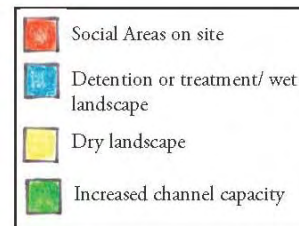






**Calculations for Stormwater Detention and Treatment**

- A. Detention area south end of site.  
Total capacity: 65,000 cu.ft.
  - B. Detention area at eastern side of site.  
Total capacity: 80,000 cu.ft.
  - C. Detention area at north of site.  
Total capacity: 400,000 cu. ft.
- Total New Detention capacity: 545,000 cu.ft.  
or 12.5 acre feet
- D. Clean and Catch Swale at open grass area.  
Total capacity: 5,040 cu. ft.
  - E. Clean and Catch Swale north of church property.  
Total capacity: 6,840 cu. ft.
  - F. Clean and Catch Swale east of side of site.  
Total capacity: 4,500 cu. ft.
  - G. Clean and Catch Swales at western parking lot.  
Total capacity: 2,700 cu.ft.
  - H. Clean and Catch Swale Rinaldi parking.  
Total capacity: 8,100 cu. ft.
- Total Swale capacity: 27,180 cu. ft.
- I. Increased channel capacity.  
Total capacity: 197,000 cu. ft.



**Brown's Canyon Wash at Route 118 and Rinaldi: Quantitative Plan**

Los Angeles River Strategic Vision  
Community Development by Design for Mountains Recreation and Conservation Authority



A landscape photograph showing a wide, flat area. In the foreground, there is a green lawn. To the right, a large, leafless tree stands prominently. The middle ground consists of a brown, tilled field. In the far distance, a city skyline is visible under a heavy, grey, overcast sky. The text "Arroyo Calabasas at Fallbrook and Hatteras" is overlaid in the center of the image.

**Arroyo Calabasas at Fallbrook and Hatteras**



Arroyo Calababas at Fallbrook and Hatteras: Site Context

Los Angeles River Strategic Vision  
Community Development by Design for Mountains Recreation and Conservation Authority









Looking south at parcel B



Red shouldered hawk on parcel D



Looking southwest at parcel C



Looking north at parcel D



Looking northeast down the Arroyo Calabasas at parcel E

## Arroyo Calabasas at Fallbrook and Hatteras: Site Context

Los Angeles River Strategic Vision

Community Development by Design for Mountains Recreation and Conservation Authority





### Arroyo Calabasas at Fallbrook and Hatteras: Site Analysis

Los Angeles River Strategic Vision  
 Community Development by Design for Mountains Recreation and Conservation Authority



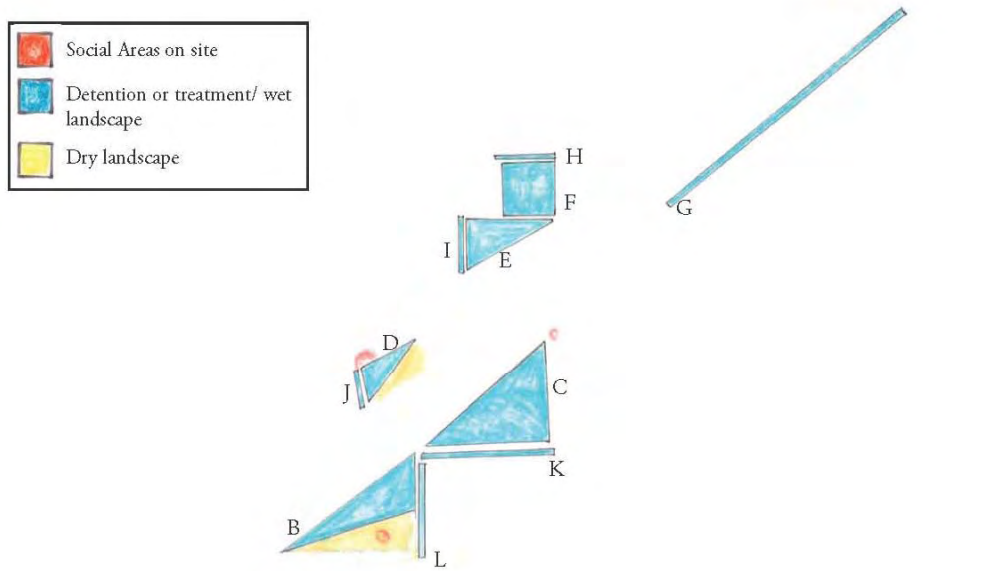




### Arroyo Calabasas at Fallbook and Hatteras: Concept Plan

Los Angeles River Strategic Vision  
 Community Development by Design for Mountains Recreation and Conservation Authority





**Calculations for Stormwater Detention and Treatment**

- A. Detention area on Collins.  
Total capacity: 2,500 cu.ft.
- B. Detention area at western edge of church property.  
Total capacity: 25,000 cu.ft.
- C. Detention area at north of church property.  
Total capacity: 50,000 cu. ft.
- D. Detention area at south side of Hatteras.  
Total capacity: 5,000 cu. ft.
- E. Detention area at north of Hatteras.  
Total capacity: 15,000 cu. ft.
- F. Detention area at Hatteras and Fallbrook.  
Total capacity: 25,000 cu. ft.

Total New Detention capacity: 122,900 cu.ft.  
or 2.81 acre feet

- G. Clean and Catch Swale at Hatteras.  
Total capacity: 8,100 cu.ft.
- H. Clean and Catch Swale at Hatteras.  
Total capacity: 1,800 cu.ft.
- I. Clean and Catch Swale at Hatteras.  
Total capacity: 1,800 cu.ft.
- J. Clean and Catch Swale at Hatteras.  
Total capacity: 1,800 cu.ft.
- K. Clean and Catch Swale north of church property.  
Total capacity: 4,500 cu. ft.
- L. Clean and Catch Swale west of church property.  
Total capacity: 3,600 cu. ft.
- M. Clean and Catch Swale at Collins.  
Total capacity: 1,800 cu. ft.

Total Swale capacity: 23,400cu.ft.

**Arroyo Calabasas at Fallbook and Hatteras: Quantitative Plan**





**Arroyo Calabasas (Dry Creek) at Ventura Boulevard**





Agenda Item 13  
SMMC  
3/24/08







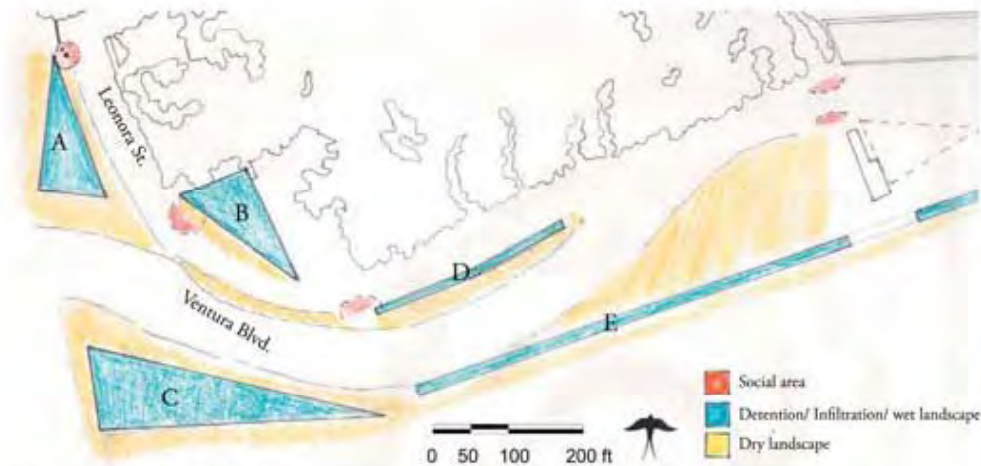
### Arroyo Calabasas at Ventura Boulevard Site: Concept Plan

Los Angeles River Strategic Vision  
 Community Development by Design for Mountains Research Conservation Authority





## STORMWATER TREATMENT



## WATER AVAILABILITY



## TREATMENT CAPACITY

- A. Detention capacity: 12,000 cu ft
- B. Detention capacity: 13,520 cu ft
- C. Caltrans detention capacity: unknown
- Total detention capacity: 25,520 cu ft (.58 ac-ft)**
- D. Catch and clean swale capacity: 4,140 cu ft
- E. Catch and clean swale capacity: 9,180 cu ft.
- Total swale capacity: 13,320 cu ft**



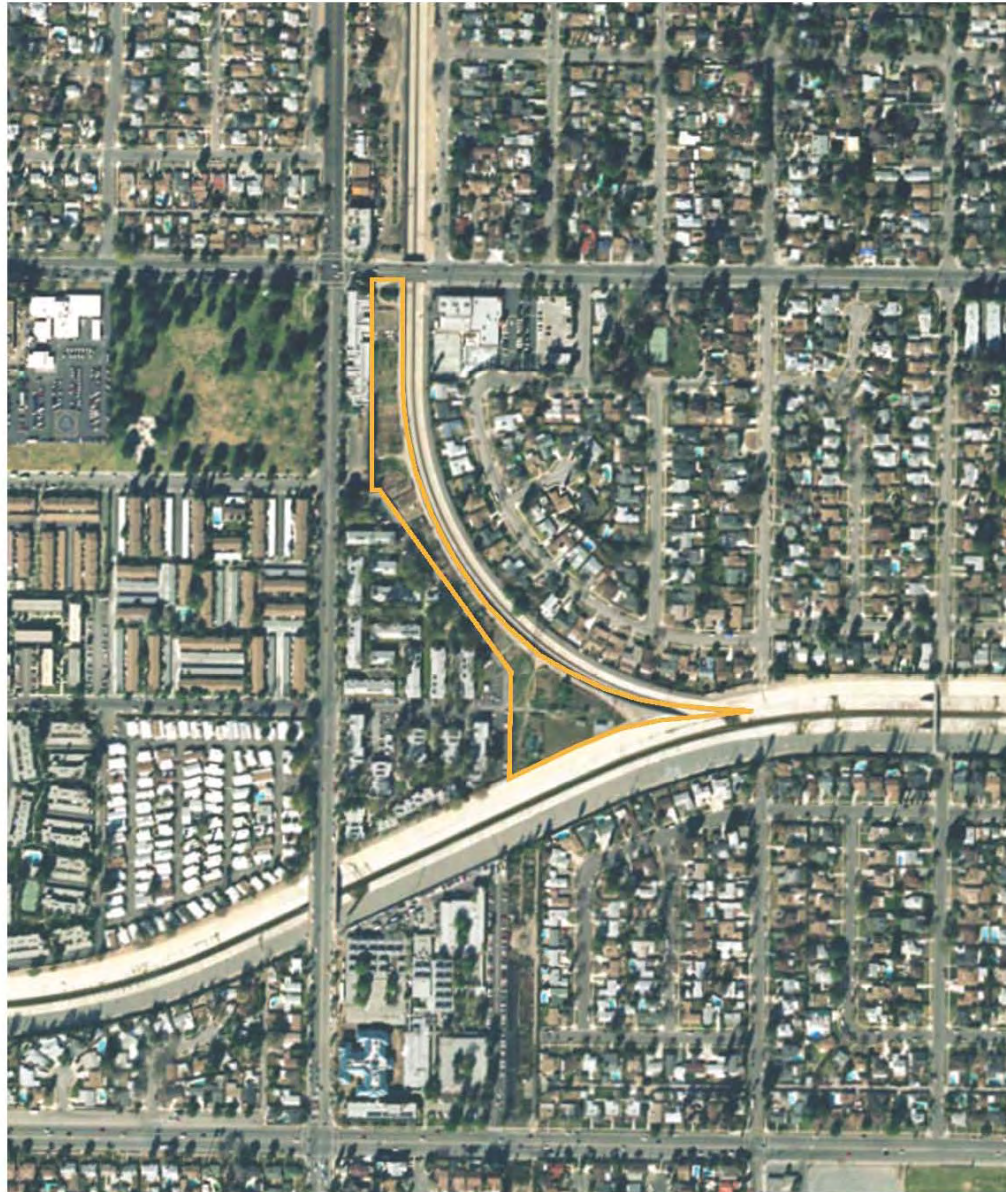
A test case for knitting together leftover fragments of land, this site can also serve as a new BMP model for Caltrans. Management partnerships with neighbors and adjacent businesses are also proposed.



**Aliso Canyon and Los Angeles River Confluence**







### Aliso Creek and Los Angeles River Confluence: Site Context

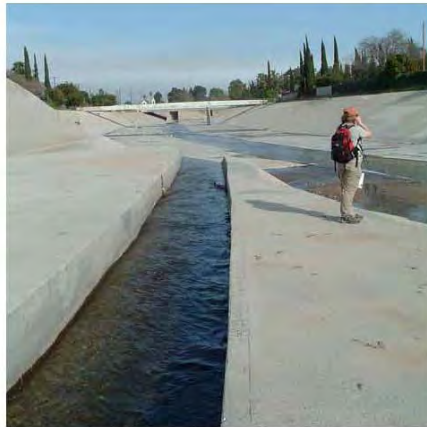
Los Angeles River Strategic Vision

Community Development by Design for Mountains Recreation and Conservation Authority





Looking upstream at the confluence of Aliso Creek and the Los Angeles River



The mouth of Aliso Creek



Community gardens line Aliso Creek



Vegetation and cell phone towers on-site

## Aliso Creek and Los Angeles River Confluence: Site Context

Los Angeles River Strategic Vision

Community Development by Design for Mountains Recreation and Conservation Authority





DWP  
2.28 Acres  
(to Vanowen)

Kittridge St. Right-of-Way

DWP  
.33 Acres

Jewish Home Parcel  
.34 Acres

Google

34°15'24.93"N 100°04'26.95"W

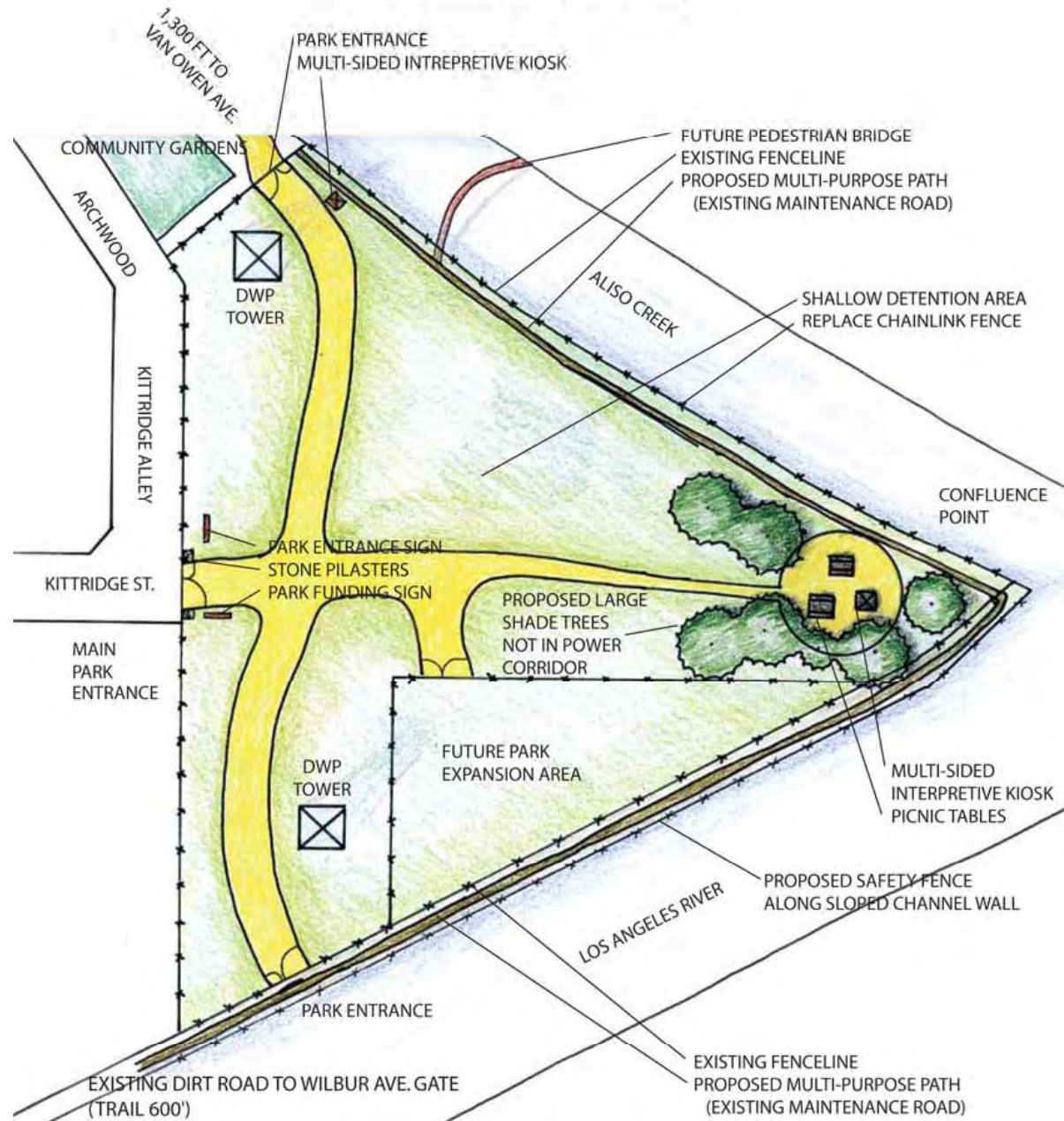
© 2007 Pubs/Geo  
City: JAX, FL

Oct 23, 2007

Foot: 965310



## 7. Site Plan (Park Site)



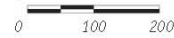
ALISO CREEK AND LOS ANGELES RIVER CONFLUENCE PARK  
MOUNTAINS RECREATION AND CONSERVATION AUTHORITY  
CITY OF LOS ANGELES DEPARTMENT OF WATER AND POWER

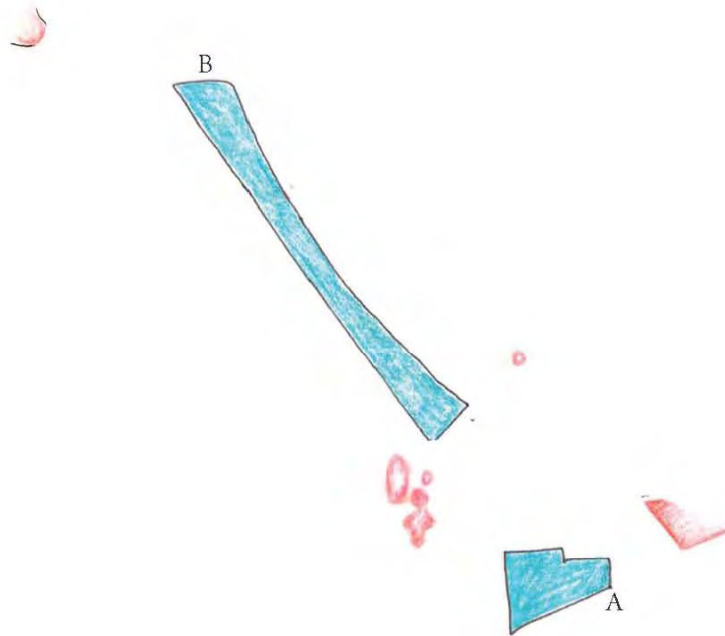


Aliso Creek and Los Angeles River Confluence: Short Term Concept Plan

Los Angeles River Strategic Vision

Community Development by Design for Mountains Recreation and Conservation Authority





**Calculations for Stormwater Detention, Infiltration and Treatment**

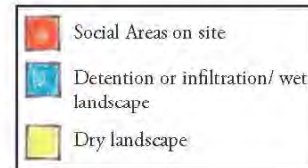
A. Detention area.

Total capacity: 44,600 cu.ft.  
or .86 acre feet

B. Infiltration area at community gardens.

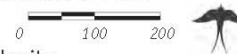
Total capacity: 37,500 cu.ft.  
or 1.02 acre feet

Total New Detention and Infiltration capacity: 82,100 cu.ft.  
or 1.88 acre feet



**Aliso Creek and Los Angeles River Confluence: Short Term Quantitative Plan**

Los Angeles River Strategic Vision  
Community Development by Design for Mountains Recreation and Conservation Authority



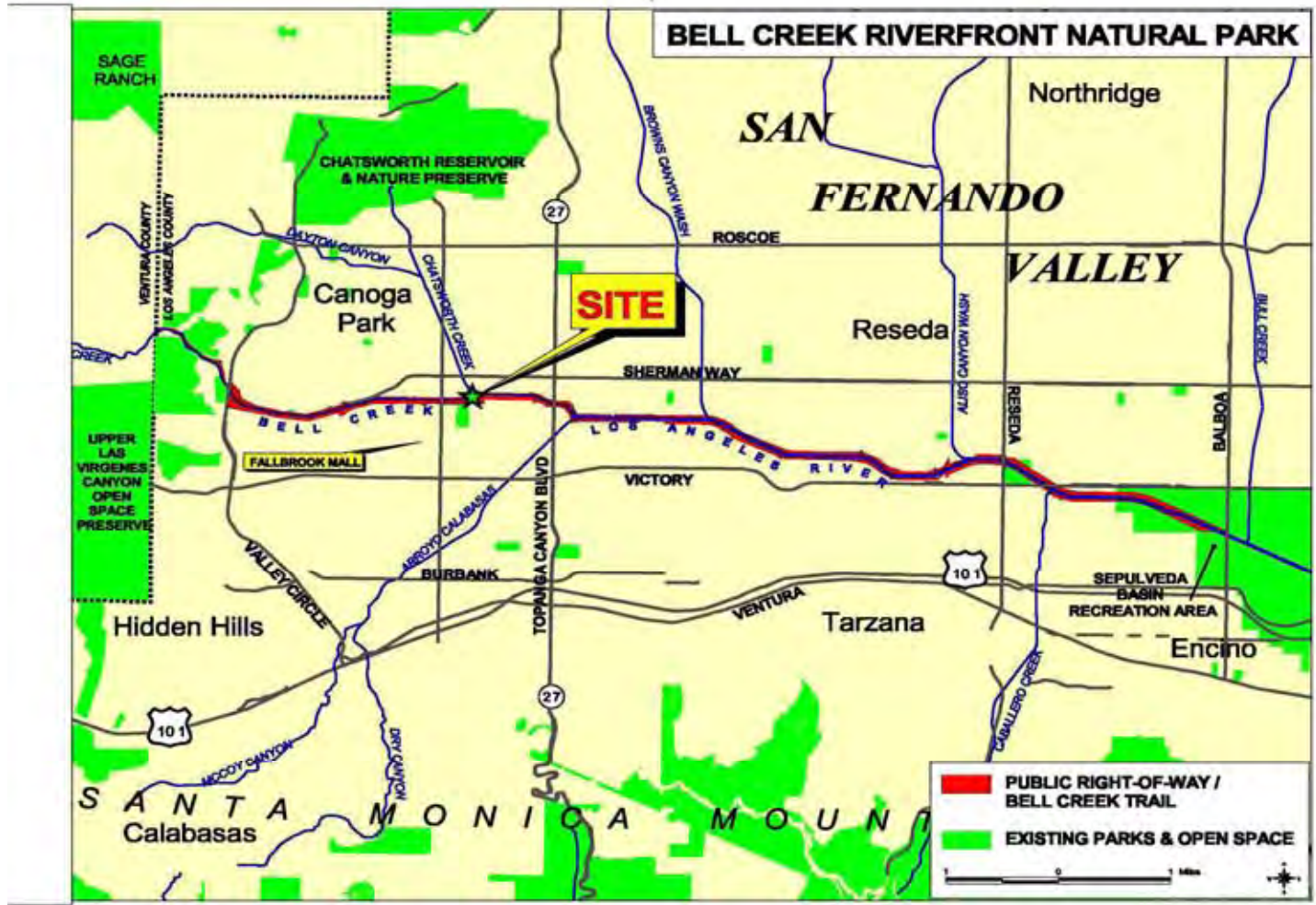




Aliso Creek and Los Angeles River Confluence: Long Term Concept Plan

Los Angeles River Strategic Vision  
 Community Development by Design for Mountains Recreation and Conservation Authority





Bell Creek Riverfront Natural Park

California River Parkways Grant Program  
Grant Application

BELL CREEK RIVERFRONT NATURAL PARK



***Submitted to:***

*California River Parkways Grant Program*

*The Resources Agency*

Bonds and Grants Unit

1416 Ninth Street, Suite 1311

Sacramento, California 95814

Submitted by:

**Mountains Recreation and Conservation Authority**

5810 Ramirez Canyon Road

Malibu, California 90265

***October 17, 2006***









## 13.0 PHOTOGRAPHS

### BELL CREEK RIVERFRONT NATURAL PARK



Photo 1: Canadian geese on park site and future residential development area.



Photo 2: Park site looking west.



## BELL CREEK RIVERFRONT NATURAL PARK



Photo 3: Looking east down LACFCD Right-of-way from Fallbrook Avenue. Park site in background with Bell Creek channel and Right-of-way in foreground.



Photo 4: Looking west up Bell Creek from Fallbrook Avenue. Upper Las Virgenes Canyon Open Space Preserve in background.

## BELL CREEK RIVERFRONT NATURAL PARK



Photo 3: Western terminus of park site looking west along continuation of Bell Creek Flood Control Right-of-way.



Photo 4: Looking east from western park terminus. Bell Creek to left.

A landscape photograph showing a large, leafless tree in the foreground on the right. The ground is a mix of green grass and brown, tilled earth. In the distance, a large, multi-story building is visible under a cloudy sky. The text "Ledeher Ranch – Bell Creek" is overlaid in the center of the image.

**Ledeher Ranch – Bell Creek**













